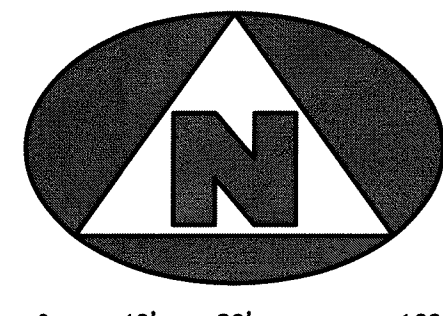


BIG DOG RANCH

BEING A REPLAT OF TRACTS 9 AND 11, BLOCK D, LOXAHATCHEE GROVES, ACCORDING TO THE PLAT THEREOF, AS RECORDED IN PLAT BOOK 12, PAGE 29, PUBLIC RECORDS, PALM BEACH COUNTY, FLORIDA, AND LYING IN SECTION 29, TOWNSHIP 43 SOUTH, RANGE 41 EAST, THE TOWN OF LOXAHATCHEE GROVES, PALM BEACH COUNTY, FLORIDA

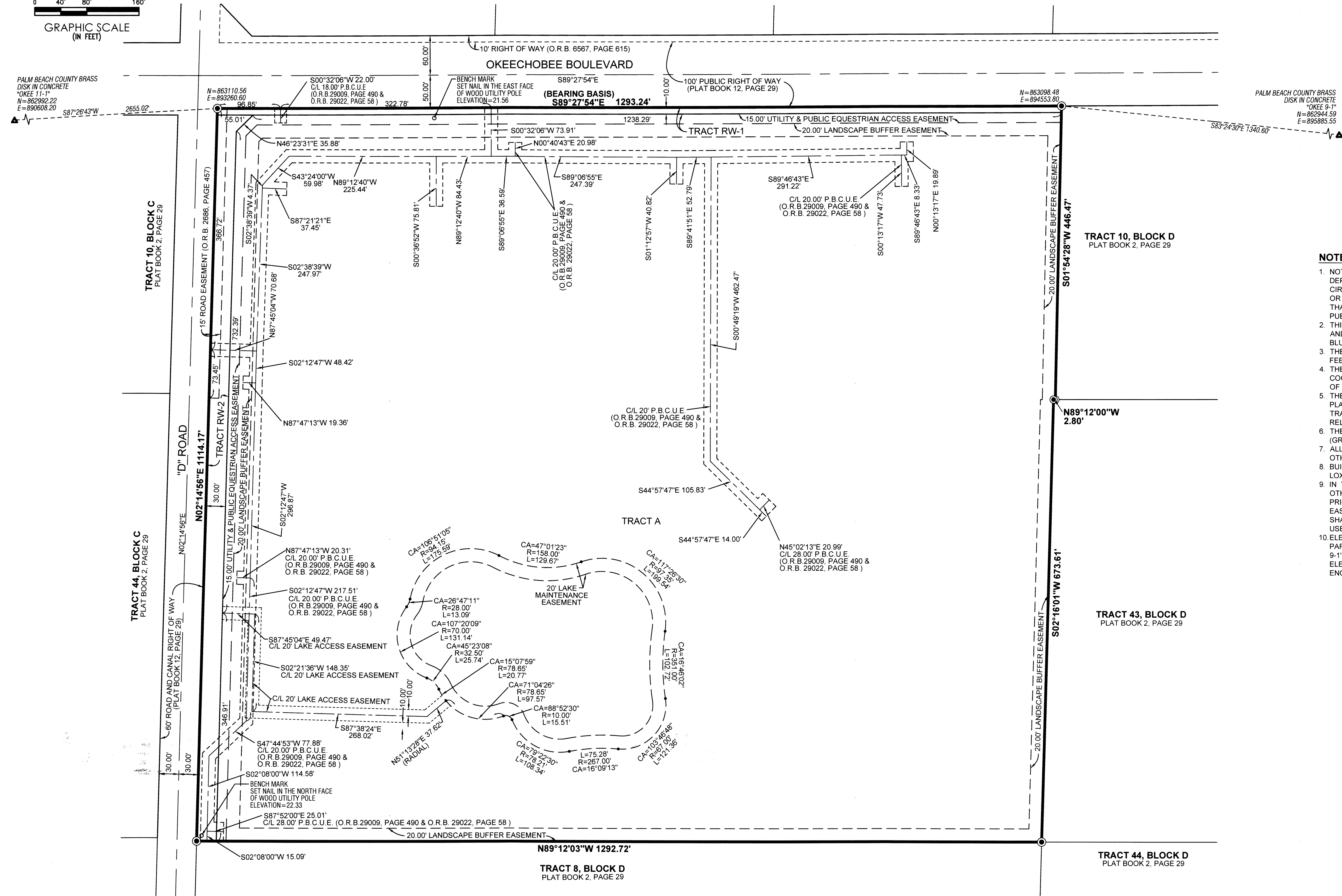
SHEET 2 OF 2

8



0 40' 80' 160'
GRAPHIC SCALE
(IN FEET)

PALM BEACH COUNTY BRASS
DISK IN CONCRETE
"OKEE 11-1"
N=862992.22
E=890608.20



NOTES

1. NOTICE: THIS PLAT AS RECORDED IN ITS GRAPHIC FORM, IS THE OFFICIAL DEPICTION OF THE SUBDIVIDED LANDS DESCRIBED HEREIN AND WILL IN NO CIRCUMSTANCES BE SUPPLANTED IN AUTHORITY BY ANY OTHER GRAPHIC OR DIGITAL FORM OF THE PLAT. THERE MAY BE ADDITIONAL RESTRICTIONS THAT ARE NOT RECORDED ON THIS PLAT THAT MAY BE FOUND IN THE PUBLIC RECORDS OF PALM BEACH COUNTY.
2. THIS INSTRUMENT WAS PREPARED BY STEPHEN L. SHIRLEY, P.S.M. 3918, IN AND FOR THE OFFICES OF ASSOCIATED LAND SURVEYOR'S, INC., 4152 WEST BLUE HERON BOULEVARD, SUITE 121, RIVIERA BEACH, FLORIDA, 33404
3. THE LINEAR DIMENSIONS SHOWN HEREON ARE GROUND DISTANCES IN U.S. FEET AND DECIMAL PARTS THEREOF.
4. THE COORDINATES SHOWN HEREON ARE STATE PLANE GRID COORDINATES ACCORDING TO THE TRANSVERSE MERCATOR PROJECTION OF THE FLORIDA EAST ZONE, N.A.D. 83, PER THE 1990 ADJUSTMENT.
5. THE BEARING BASIS (BB) AS SHOWN HEREON, IS BASED ON THE STATE PLANE GRID AZIMUTH BEARING OF SOUTH 89°27'54\"/>

LEGEND

- DENOTES A SET PERMANENT REFERENCE MONUMENT
- DENOTES AN IRON ROD AND CAP STAMPED "PRM LB 7344"
- CA DENOTES CENTRAL ANGLE
- CB DENOTES A CHORD BEARING
- C/L DENOTES A CENTERLINE
- L DENOTES ARC LENGTH
- (NR) DENOTES A NON-RADIAL LINE
- O.R.B. DENOTES OFFICIAL RECORDS BOOK
- P.B.C.U.E. DENOTES PALM BEACH COUNTY UTILITY EASEMENT
- R DENOTES RADIUS DISTANCE
- R/W DENOTES RIGHT-OF-WAY

	ASSOCIATED LAND SURVEYORS, INC.	
	4152 W. BLUE HERON BLVD. SUITE 121 RIVIERA BEACH, FLORIDA 33404 PHONE: (561) 848-2102 FAX: (561) 844-9659 LB NO. 7344 EMAIL: als@alssurvey.net	
BIG DOG RANCH		
SCALE: 1" = 80'	DWN: BLS	WO NO.: P1304 SHEET 2 OF 2